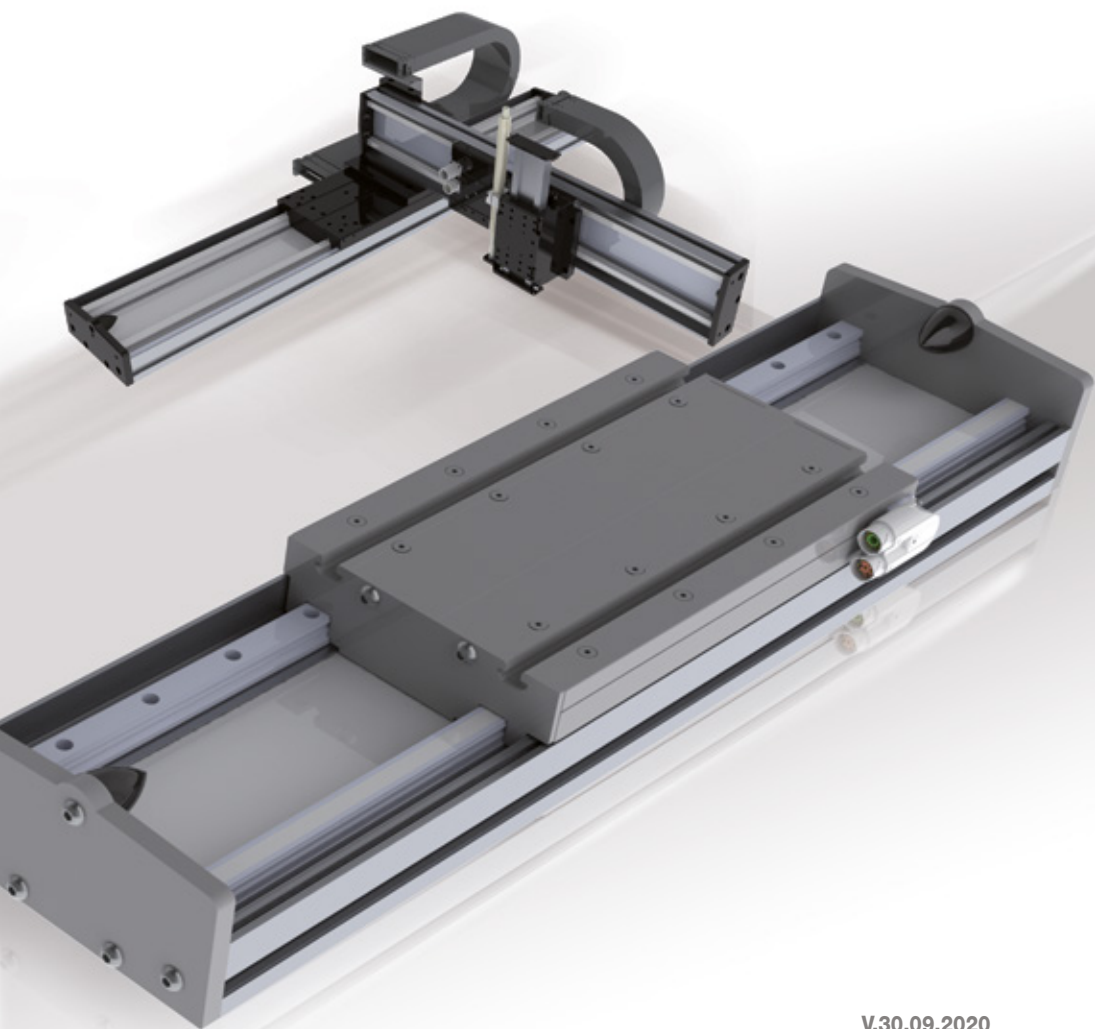


SINADRIVES[®]
DIRECT DRIVE EXPERTS

Zubehör



V.30.09.2020

Serie:

MLE/ MLU/ MLZ

MLL/ MLLZ/ MCE

Inhaltsverzeichnis

- 1. Endschalter**
- 2. Leistungskabel**
- 3. Messsystemkabel**
- 4. Zentralschmiersystem**
- 5. Montageblock**
- 6. Montage set**
- 7. Nutzensteine**
- 10. Außergewöhnliches Achsenpinout**
- 11. Messsystemkabel außergewöhnliche Pinbelegung**

SINADRIVES GmbH

Schumannstraße 27 | 60325 Frankfurt am Main
Tel. +49 (0) 69 505 027 470
www.sinadrives.com / info@sinadrives.com

or

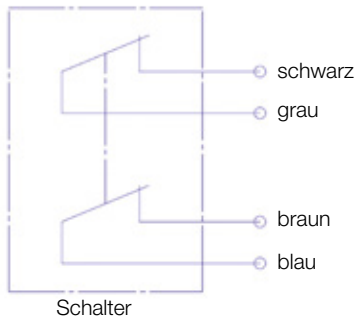
SINADRIVES, SAIN Automation Solutions S.L.

Avinguda Mas Pins, 164 Nave 6
17457 Riudellots de la Selva - Girona Spanien
Tel. +34 972 442 452 / Fax. +34 972 442 317
www.sinadrives.com / info@sinadrives.com

Innovation & Excellence

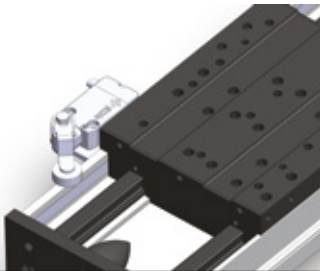
1. Endschalter

Die Endschalter haben zwei geschlossene Kontakte. Auf dem unteren Bild können die Farbkodifizierung der Kabel:

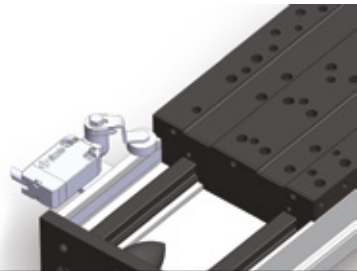


Um die gewünschte Position zu erreichen kann der Kopf des Schalters 90, 180 oder 270 Grad gedreht werden. Das Verdrehen ist durch das Lockern der 2 Schrauben auf dem Plastikgehäuse erreichbar. Nach dem Positionieren des Kopfes muss nun, um den Betätigungswinkel einzustellen, der Hebel angepasst werden. Um den Hebel anzupassen, lockern Sie die Schraube am Kopf und bringen Sie ihn in die gewünschte Stellung.

Bei der Montage der Endschalter achten Sie auf die richtigen Positionen. Auf den folgenden Bildern können Sie die richtige und falsche Position sehen.



RICHTIG!
Der Schlitten kann den Schalter nicht beschädigen.



FALSCH!
Der Schlitten beschädigt den Schalter.

2. Leistungskabel

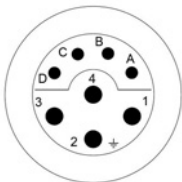
Bezeichnungen

| | | | | | |
|----------------------------|-------------|----------|----------|-----------|-----------|
| | AC05 | P | M | 00 | 10 |
| Sinadrives Kabel | | | | | |
| P: Leistungskabel | | | | | |
| Anschluss Linearmotorachse | | | | | |
| M: M23 | | | | | |
| Y: Y-TEC | | | | | |
| 0: freie Litzen | | | | | |
| Pinout | | | | | |
| 00: Standard | | | | | |
| Kabellänge, in Meter | | | | | |

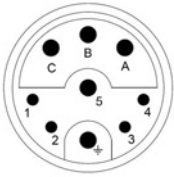
Technische Daten:

| | AC05-PMxxxx | AC05-PYxxxx |
|--------------------------------------|---|-------------------------------|
| Min. Biegeradius (statisch): | 39mm | 39mm |
| Min. Biegeradius (dynamisch): | 92mm | 92mm |
| Arbeitstemperatur: | -40 .. +80°C | -40 .. +80°C |
| Durchmesser: | 12,2mm | 12,2mm |
| Kabelquerschnitt: | 4G1,5+2x2x0,75mm ² | 4G1,5+2x2x0,75mm ² |
| Außenmaterial: | PUR | PUR |
| Widerstandsfähigkeit: | gegen Öl, Hydrolysis und Micro Einflüsse (VDE 0472) | |
| Gewicht: | 0,19Kg/m | 0,19Kg/m |
| Nennstrom: | 16A | 16A |
| Lebensdauer: | 10M Zyklen | 10M Zyklen |
| Maximale Beschleunigung: | 50m/s ² | 50m/s ² |
| Maximale Geschwindigkeit: | 300m/min | 300m/min |

Standard Pinout:



| AC05-PMxxxx | | |
|--------------------|---------------|---------------|
| M23 | Signal | Output |
| 1 | U | U/L1 |
| 4 | V | V/L2 |
| 3 | W | W/L3 |
| 2 | PE | grün/gelb |
| A | KTY21 | 7 |
| B | KTY21 | 8 |
| C | PTC+ | 5 |
| D | PTC- | 6 |



| AC05-EYxxxx | | |
|-------------|--------|-----------|
| Y-TEC | Signal | Output |
| A | U | U/L1 |
| B | V | U/L2 |
| C | W | W/L3 |
| PE | PE | grün/gelb |
| 1 | KTY21 | 7 |
| 2 | KTY21 | 8 |
| 3 | PTC+* | 5 |
| 4 | PTC+* | 6 |

* die Leitungen werden nur dann angeschlossen, wenn sie nicht am Geberkabel ausgeführt werden (jeweils immer nur an einem Ort).

3. Messsystemkabel

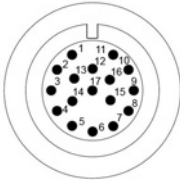
Bezeichnungen

| | | | | | |
|----------------------------|-------------|----------|----------|-----------|-----------|
| | AC05 | E | M | 00 | 10 |
| Sinadrives Kabel | | | | | |
| E: Geberkabel | | | | | |
| Anschluss Linearmotorachse | | | | | |
| M: M23 | | | | | |
| Y: Y-TEC | | | | | |
| O: freie Litzen | | | | | |
| Pinout | | | | | |
| 00: Standard | | | | | |
| Kabellänge, in Meter | | | | | |

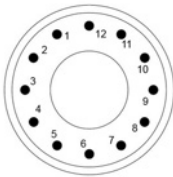
Technische Daten:

| | AC05-EMxxxx | AC05-EYxxxx |
|--------------------------------------|---|-------------------------------|
| Min. Biegeradius (statisch): | 28mm | 28mm |
| Min. Biegeradius (dynamisch): | 56mm | 56mm |
| Arbeitstemperatur: | -40 .. +80°C | -40 .. +80°C |
| Durchmesser: | 9,2mm | 9,2mm |
| Kabelquerschnitt: | 4x2x0,34+4x0,5mm ² | 4x2x0,34+4x0,5mm ² |
| Außenmaterial: | PUR | PUR |
| Widerstandsfähigkeit: | gegen Öl, Hydrolysis und Micro Einflüsse (VDE 0472) | |
| Gewicht: | 0,13Kg/m | 0,13Kg/m |
| Lebensdauer: | 6M Zyklen | 6M Zyklen |
| Maximale Beschleunigung: | 30m/s ² | 30m/s ² |
| Maximale Geschwindigkeit: | 240m/min | 240m/min |

Standard Pinout:



| AC05-EMxxxx | | |
|-------------|------------|--------------|
| M23 | Signal | Output |
| 1 | A+ (COS) | grün |
| 2 | A- (COS) | gelb |
| 3 | B+ (SIN) | braun |
| 4 | B- (SIN) | schwarz |
| 7 | GND | schwarz/weiß |
| 8 | Vcc | rot/weiß |
| 10 | RI+/DATA+ | violett |
| 11 | RI-/DATA- | blau |
| 12 | CLK+ | rot |
| 13 | CLK- | orange |
| 16 | Vcc sensor | gelb/weiß |
| 17 | GND sensor | blau/weiß |



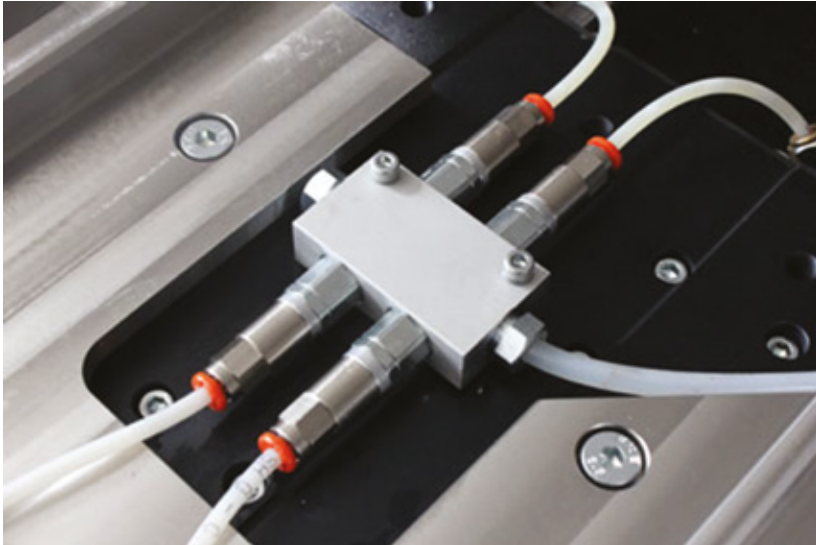
| AC05-EYxxxx | | |
|-------------|-----------|--------------|
| Y-TEC | Signal | Output |
| 1 | A+ (COS) | grün |
| 2 | A- (COS) | gelb |
| 3 | B+ (SIN) | braun |
| 4 | B- (SIN) | schwarz |
| 5 | RI+/DATA+ | violett |
| 6 | RI-/DATA- | blau |
| 7 | Vcc | rot/weiß |
| 8 | GND | schwarz/weiß |
| 9 | PTC+ | gelb/weiß |
| 10 | PTC- | blau/weiß |
| 11 | CLK+ | rot |
| 12 | CLK- | orange |

4. Zentralschmiersystem

Als Option bietet SINADRIVES eine zentrale Ölschmierung an. Alle zu schmierenden Stellen sind durch einen 6mm Schlauch verbunden.

Dieses System erlaubt es alle zu schmierenden Punkte elektrisch, pneumatisch oder manuell zu erreichen. Die elektrische als auch pneumatische Pumpe ist nicht in der Lieferung inbegriffen. Wir empfehlen das Einsetzen einer Pumpe mit einem Mindestdruck von 25 bar. Die beste Kontrolle des Systemes erfolgt über den PIL. Die Dosierungszeit sollte zwischen 20-30 Sekunden betragen.

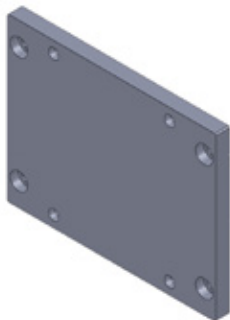
Als Zuführung empfehlen wir eine Leitung mit Aussendurchmesser 6 mm und einer Wandstärke von 1,5mm welche einen Minimaldruck von 25 bar standhält.



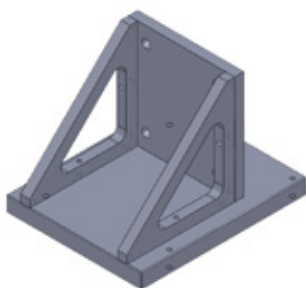
5. Montageblock

Sinadrives bietet die Möglichkeit mehrere Achsen mit Hilfe von Montageblöcken als komplette Portallösung zu kombinieren. Die Montageblöcke werden mit den zur Montage benötigten Schrauben und Stiften geliefert.

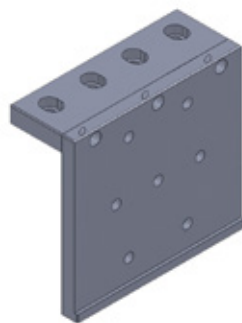
■ AC01-Fxx000



■ AC01-Sxx000



■ AC01-Lxx000



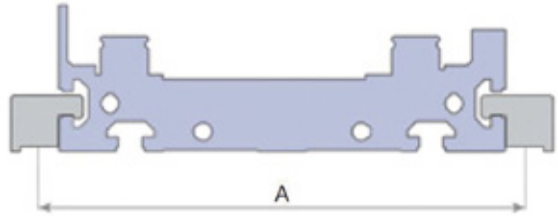
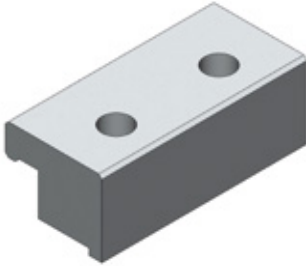
Nomenklatur

| | | | | |
|----------------------------|------|---|----|-----|
| | AC01 | F | L2 | 000 |
| Montage Block | | | | |
| F: Flache Montageplatte | | | | |
| S: Winkel Montageblock | | | | |
| L: Seitlicher Montageblock | | | | |
| Grundachse | | | | |
| L2: MLL2 | | | | |
| E2: MLE2 | | | | |
| C3: MCE3 | | | | |
| ... | | | | |
| Version | | | | |
| 000: Ausführung | | | | |

6. Montage Set

Diese Spannpratzen ermöglichen es Ihnen Sinadrives Einheiten leicht an Ihre Maschinenkörper zu befestigen.

■ AC03-2501



| Lineareinheit | A (mm) |
|---------------|--------|
| MLE2 / MLL2 | 152 |
| MLE3 / MLL3 | 157 |
| MLE5 / MLL5 | 204 |

■ AC03-2502 (Für MLx2)



■ AC03-2503 (Für MLx3)

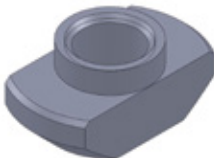


■ AC03-2505 (Für MLx5)

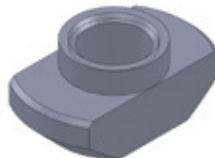


7. Nutensteine

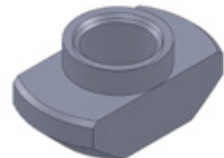
■ KTM05



■ KTM06



■ KTM08

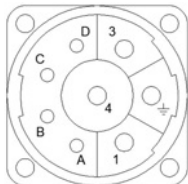


10. Außergewöhnliches Achsenpinout

Die speziellen Achsenpinouts sind bei den SINADRIVES Achsen im Bestellungscode nach der Steckerausführung zu finden. Wie das folgende Beispiel: MLE30420HS-00-40-0(04)-0-...

10.1. Code (01): Beckhoff AX5xxxx

M23 LEISTUNGSSTECKER



| PIN | Signal |
|-----|--------|
| 1 | U |
| 4 | V |
| 3 | W |
| 2 | PE |
| A | KTY+ |
| B | KTY- |
| C | PTC+ |
| D | PTC- |

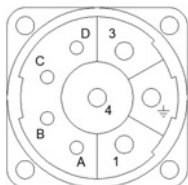
M23 MESSSYSTEMSTECKER



| PIN | Signal |
|-----|----------|
| 1 | B- (SIN) |
| 2 | GND |
| 3 | A- (COS) |
| 4 | Vcc |
| 7 | RI- |
| 9 | B+ (SIN) |
| 10 | GND sens |
| 11 | A+ (COS) |
| 12 | Vcc sens |
| 14 | RI+ |

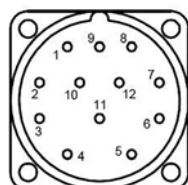
10.2. Code (02): IGAS Drive

M23 LEISTUNGSSTECKER



| PIN | Signal |
|-----|--------|
| 1 | U |
| 4 | V |
| 3 | W |
| 2 | PE |
| A | PTC+ |

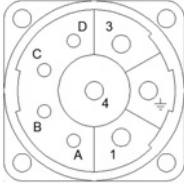
M23-12 MESSSYSTEMSTECKER



| PIN | Signal |
|-----|----------|
| 1 | A+ (COS) |
| 2 | A- (COS) |
| 3 | B+ (SIN) |
| 4 | B- (SIN) |
| 5 | KTY+ |
| 6 | KTY- |
| 7 | GND |
| 8 | Vcc |
| 9 | Vcc sens |
| 10 | GND sens |
| 11 | RI+ |
| 12 | RI- |

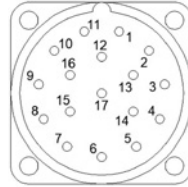
10.3. Code (03): AKM, Kollmorgen, Sigmatek - (PTC in power)

M23 LEISTUNGSSTECKER



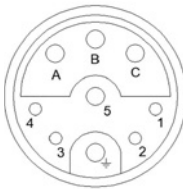
| PIN | Signal |
|-----|--------|
| 1 | U |
| 4 | V |
| 3 | W |
| 2 | PE |
| A | PTC+ |
| B | PTC- |

M23 MESSSYSTEMSTECKER



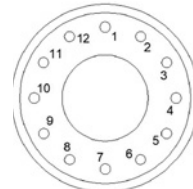
| PIN | Signal |
|-----|----------|
| 1 | B- (SIN) |
| 2 | GND |
| 3 | A- (COS) |
| 4 | Vcc |
| 5 | RI+ |
| 7 | KTY+ |
| 9 | B+ (SIN) |
| 10 | GND sens |
| 11 | A+ (COS) |
| 12 | Vcc sens |
| 13 | RI- |
| 14 | KTY- |

YTEC LEISTUNGSSTECKER



| PIN | Signal |
|-----|--------|
| A | U |
| B | V |
| C | W |
| PE | PE |
| 1 | PTC+ |
| 2 | PTC- |

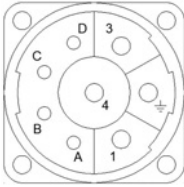
YTEC MESSSYSTEMSTECKER



| PIN | Signal |
|-----|----------|
| 1 | KTY+ |
| 2 | KTY- |
| 4 | B- (SIN) |
| 5 | A- (COS) |
| 6 | RI+ |
| 7 | RI- |
| 8 | B+ (SIN) |
| 9 | A+ (COS) |
| 10 | Vcc |
| 11 | GND |

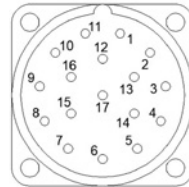
10.4. Code (04): AKM, Kollmorgen, Sigmatek - (PTC in feedback)

M23 LEISTUNGSSTECKER



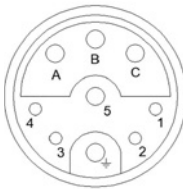
| PIN | Signal |
|-----|--------|
| 1 | U |
| 4 | V |
| 3 | W |
| 2 | PE |
| A | KTY+ |
| B | KTY- |

M23 MESSSYSTEMSTECKER



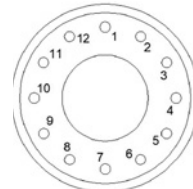
| PIN | Signal |
|-----|----------|
| 1 | B- (SIN) |
| 2 | GND |
| 3 | A- (COS) |
| 4 | Vcc |
| 5 | RI+ |
| 7 | PTC+ |
| 9 | B+ (SIN) |
| 10 | GND sens |
| 11 | A+ (COS) |
| 12 | Vcc sens |
| 13 | RI- |
| 14 | PTC- |

YTEC LEISTUNGSSTECKER



| PIN | Signal |
|-----|--------|
| A | U |
| B | V |
| C | W |
| PE | PE |
| 1 | KTY+ |
| 2 | KTY- |

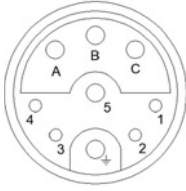
YTEC MESSSYSTEMSTECKER



| PIN | Signal |
|-----|----------|
| 1 | PTC+ |
| 2 | PTC- |
| 4 | B- (SIN) |
| 5 | A- (COS) |
| 6 | RI+ |
| 7 | RI- |
| 8 | B+ (SIN) |
| 9 | A+ (COS) |
| 10 | Vcc |
| 11 | GND |

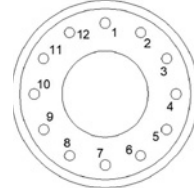
10.6. Code (06): Schneider

YTEC LEISTUNGSSTECKER



| PIN | Signal |
|-----|--------|
| A | U |
| B | V |
| C | W |
| PE | PE |
| 1 | PTC+ |
| 2 | PTC- |
| 3 | KTY+ |
| 4 | KTY- |

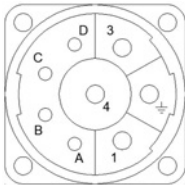
YTEC MESSSYSTEMSTECKER



| PIN | Signal |
|-----|--------------|
| 1 | A+ (COS) |
| 2 | A- (COS) |
| 3 | B+ (SIN) |
| 4 | B- (SIN) |
| 7 | Vcc (10V) |
| 8 | GND |
| 9 | Vcc aux (5V) |
| 11 | RI+ |
| 12 | RI- |

10.7. Code (07): Kruss (Standard + HALL signals)

M23 LEISTUNGSSTECKER



| PIN | Signal |
|-----|--------|
| 1 | U |
| 4 | V |
| 3 | W |
| 2 | PE |
| A | KTY+ |
| B | KTY- |
| C | PTC+ |
| D | PTC- |

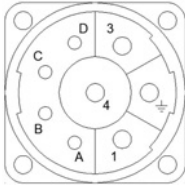
M23 MESSSYSTEMSTECKER



| PIN | Signal |
|-----|----------|
| 1 | A+ (COS) |
| 2 | A- (COS) |
| 3 | B+ (SIN) |
| 4 | B- (SIN) |
| 7 | GND |
| 8 | Vcc |
| 10 | RI+ |
| 11 | RI- |
| 12 | HALL 1 |
| 13 | HALL 2 |
| 14 | HALL Vcc |
| 15 | HALL GND |
| 16 | Vcc sens |
| 17 | GND sens |

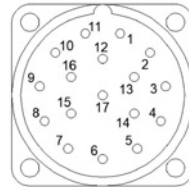
10.51. Code (51): Beckhoff AX5xxxx (Absolutes Messsystem)

M23 LEISTUNGSSTECKER



| PIN | Signal |
|-----|--------|
| 1 | U |
| 4 | V |
| 3 | W |
| 2 | PE |
| A | KTY+ |
| B | KTY- |
| C | PTC+ |
| D | PTC- |

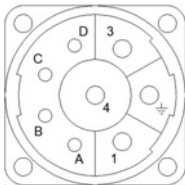
M23 MESSSYSTEMSTECKER



| PIN | Signal |
|-----|----------|
| 1 | A+ (COS) |
| 2 | GND |
| 3 | B+ (SIN) |
| 4 | Vcc |
| 5 | DATA+ |
| 8 | CLK+ |
| 9 | A- (COS) |
| 10 | GND sens |
| 11 | B- (SIN) |
| 12 | Vcc sens |
| 13 | DATA- |
| 15 | CLK- |

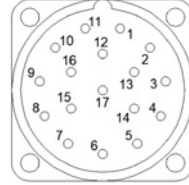
10.54. Code (54): ESR, AMO (Absolutes Messsystem)

M23 LEISTUNGSSTECKER



| PIN | Signal |
|-----|--------|
| 1 | U |
| 4 | V |
| 3 | W |
| 2 | PE |
| A | KTY+ |
| B | KTY- |
| C | PTC+ |
| D | PTC- |

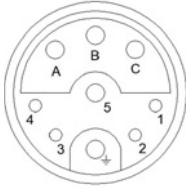
M23 MESSSYSTEMSTECKER



| PIN | Signal |
|-----|----------|
| 1 | Vcc sens |
| 4 | GND sens |
| 7 | Vcc |
| 8 | CLK+ |
| 9 | CLK- |
| 10 | GND |
| 12 | B+ (SIN) |
| 13 | B- (SIN) |
| 14 | DATA+ |
| 15 | A+ (COS) |
| 16 | A- (COS) |
| 17 | DATA- |

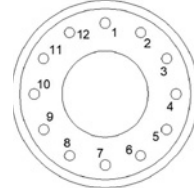
10.55. Code (55): B&R

YTEC LEISTUNGSSTECKER



| PIN | Signal |
|-----|--------|
| A | U |
| B | V |
| C | W |
| PE | PE |
| 1 | KTY+ |
| 2 | KTY- |
| 3 | PTC+ |
| 4 | PTC- |

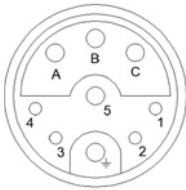
YTEC MESSSYSTEMSTECKER



| PIN | Signal |
|-----|--------|
| 1 | Vcc |
| 2 | DATA+ |
| 3 | DATA- |
| 4 | CLK+ |
| 5 | CLK- |
| 7 | GND |

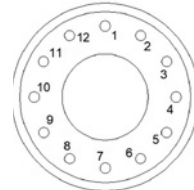
10.56. Code (56): STÖBER

YTEC LEISTUNGSSTECKER



| PIN | Signal |
|-----|--------|
| A | U |
| B | V |
| C | W |
| PE | PE |
| 1 | KTY+ |
| 2 | KTY- |
| 3 | PTC+ |
| 4 | PTC- |

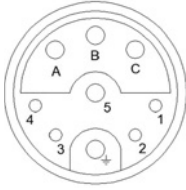
YTEC MESSSYSTEMSTECKER



| PIN | Signal |
|-----|--------|
| 1 | CLK+ |
| 5 | DATA+ |
| 6 | DATA- |
| 8 | CLK- |
| 10 | GND |
| 12 | Vcc |

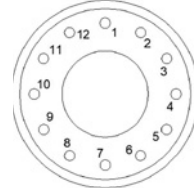
10.T0. Code (T0): Erhältliche Wärmesensoren am YTEC-Stromanschluss

YTEC LEISTUNGSSTECKER



| PIN | Signal |
|-----|--------|
| A | U |
| B | V |
| C | W |
| PE | PE |
| 1 | KTY+ |
| 2 | KTY- |
| 3 | PTC+ |
| 4 | PTC- |

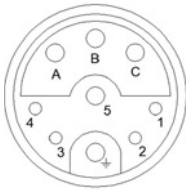
YTEC MESSSYSTEMSTECKER



| PIN | Signal |
|-----|-----------------------------------|
| 9 | not connected |
| 10 | not connected |
| * | other pins as Sinadrives standard |

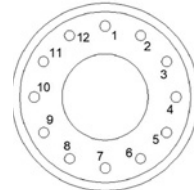
10.T1. Code (T1): Ausgetauschte Wärmesensoren

YTEC LEISTUNGSSTECKER



| PIN | Signal |
|-----|--------|
| A | U |
| B | V |
| C | W |
| PE | PE |
| 1 | PTC+ |
| 2 | PTC- |

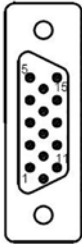
YTEC MESSSYSTEMSTECKER



| PIN | Signal |
|-----|-----------------------------------|
| 9 | KTY+ |
| 10 | KTY- |
| * | other pins as Sinadrives standard |

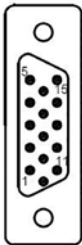
11. Messsystemkabel außergewöhnliche Pinbelegung

11.1a.- AC05-EM01xx: LTi ServoOne Junior



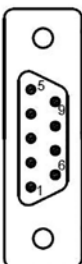
| SUB-D 15pin-HD | |
|----------------|-------------|
| PIN | Signal |
| 1 | A- (COS) |
| 2 | A+ (COS) |
| 3 | Vcc |
| 4 | RI+ / DATA+ |
| 5 | RI- / DATA- |
| 6 | B- (SIN) |
| 8 | GND |
| 11 | B+ (SIN) |
| 12 | Vcc sens |
| 13 | GND sens |
| 14 | CLK+ |
| 15 | CLK- |

11.1b.- AC05-EY01xx: LTi ServoOne Junior



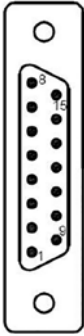
| SUB-D 15pin-HD | |
|----------------|-------------|
| PIN | Signal |
| 1 | A- (COS) |
| 2 | A+ (COS) |
| 3 | Vcc |
| 4 | RI+ / DATA+ |
| 5 | RI- / DATA- |
| 6 | B- (SIN) |
| 8 | GND |
| 9 | PTC- |
| 10 | PTC+ |
| 11 | B+ (SIN) |
| 14 | CLK+ |
| 15 | CLK- |

11.2.- AC05-EM02xx / AC05-EY02xx: B&R - 8BAC0120.001-2 module



| SUB-D 9pin | |
|------------|--------|
| PIN | Signal |
| 1 | Vcc |
| 4 | DATA+ |
| 5 | CLK+ |
| 6 | GND |
| 8 | DATA- |
| 9 | CLK- |

11.3.- AC05-EM03xx / AC05-EY03xx: Beckhoff AX5000 (X11 and X21)



| SUB-D 15pin | |
|-------------|----------|
| PIN | Signal |
| 1 | B+ (SIN) |
| 2 | GND |
| 3 | A+ (COS) |
| 4 | Vcc |
| 7 | RI- |
| 9 | B- (SIN) |
| 10* | GND sens |
| 11 | A- (COS) |
| 12* | Vcc sens |
| 14 | RI+ |

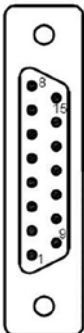
*Only available on AC05-EM03xx

11.4.- AC05-EM04xx / AC05-EY04xx: Panasonic



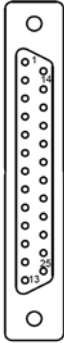
| MUF-PK10K-X | |
|-------------|-------------|
| PIN | Signal |
| 1 | Vcc |
| 2 | GND |
| 3 | RD - EXPS |
| 4 | /RD - /EXPS |
| 5 | A+ |
| 6 | A- |
| 7 | B+ |
| 8 | B- |
| 9 | RI+ |
| 10 | RI- |

11.5.- AC05-EM05xx / AC05-EY05xx: Lenze 9400 (X8) / B&R 8ECG adapter Kabel (Absolut)



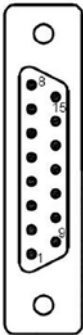
| SUB-D 15pin | |
|-------------|-------------|
| PIN | Signal |
| 1 | A+ (COS) |
| 2 | GND |
| 3 | B+ (SIN) |
| 4 | Vcc |
| 5 | RI+ / DATA+ |
| 8 | CLK+ |
| 9 | A- (COS) |
| 11 | B- (SIN) |
| 13 | RI- / DATA- |
| 15 | CLK- |

11.6.- AC05-EM06xx / AC05-EY06xx: Siemens SMC20



| SUB-D 25pin | |
|-------------|----------|
| PIN | Signal |
| 2 | GND |
| 3 | A+ (COS) |
| 4 | A- (COS) |
| 6 | B+ (SIN) |
| 7 | B- (SIN) |
| 14 | Vcc sens |
| 16 | GND sens |
| 17 | RI+ |
| 18 | RI- |

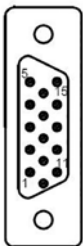
11.7.- AC05-EM07xx / AC05-EY07xx: SEW (DEU21B)



| SUB-D 15pin | |
|-------------|----------|
| PIN | Signal |
| 1 | A+ (COS) |
| 2 | B+ (SIN) |
| 3 | CLK+ |
| 4 | DATA+ |
| 6* | PTC- |
| 8 | GND |
| 9 | A- (COS) |
| 10 | B- (SIN) |
| 11 | CLK- |
| 12 | DATA- |
| 14* | PTC+ |
| 15 | Vcc |

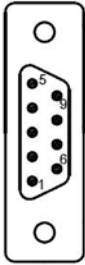
*Only available in AC05-EY07xx

11.8.- AC05-EM08xx / AC05-EY08xx: Emerson, Control Techniques



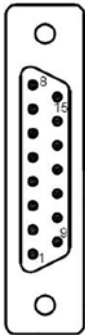
| SUB-D 15pin-HD | |
|----------------|-------------|
| PIN | Signal |
| 1 | A+ (COS) |
| 2 | A- (COS) |
| 3 | B+ (SIN) |
| 4 | B- (SIN) |
| 5 | RI+ / DATA+ |
| 6 | RI- / DATA- |
| 11 | CLK+ |
| 12 | CLK- |
| 13 | Vcc |
| 14 | GND |

11.11.- AC05-EM11xx / AC05-EY11xx: LTi resolver



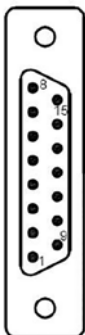
| SUB-D 9pin | |
|------------|----------|
| PIN | Signal |
| 1 | A+ (COS) |
| 2 | A- (COS) |
| 3 | B+ (SIN) |
| 4 | Vcc |
| 5 | PTC+ |
| 7 | GND |
| 8 | B- (SIN) |
| 9 | PTC- |

11.13a.- AC05-EM13xx: Beckhoff AX5000 (Absolut - X41 or X42)



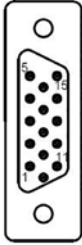
| SUB-D 15pin | |
|-------------|------------|
| PIN | Signal |
| 2 | GND |
| 4 | Vcc |
| 5 | DATA+ |
| 8 | CLK+ |
| 10 | Vcc sensor |
| 12 | GND sensor |
| 13 | DATA- |
| 15 | CLK- |

11.13b.- AC05-EY13xx: Beckhoff AX5000 (Absolut - X41 or X42)



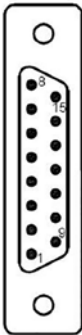
| SUB-D 15pin | |
|-------------|--------|
| PIN | Signal |
| 2 | GND |
| 4 | Vcc |
| 5 | DATA+ |
| 8 | CLK+ |
| 13 | DATA- |
| 15 | CLK- |

11.14.- AC05-EY14xx: Parker (Analog Hall)



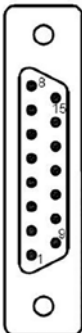
| SUB-D 15pin-HD | |
|----------------|----------|
| PIN | Signal |
| 4 | Vcc |
| 5 | PTC+ |
| 7 | A- (COS) |
| 8 | A+ (COS) |
| 10 | PTC- |
| 11 | B- (SIN) |
| 12 | B+ (SIN) |
| 15 | GND |

11.15.- AC05-EY15xx: B&R 8ECG adapter Kabel (Sin/Cos)



| SUB-D 15pin | |
|-------------|----------|
| PIN | Signal |
| 1 | A+ (COS) |
| 2 | GND |
| 3 | B+ (SIN) |
| 4 | Vcc |
| 5 | RI+ |
| 8 | PTC+ |
| 9 | A- (COS) |
| 11 | B- (SIN) |
| 13 | RI- |
| 15 | PTC- |

11.16.- AC05-EM16xx / AC05-EY16xx: OMRON SC01K-E adapter (Sin/Cos)



| SUB-D 15pin | |
|-------------|----------|
| PIN | Signal |
| 4 | RI- |
| 5 | A- (COS) |
| 6 | B- (SIN) |
| 8 | Vcc |
| 9 | GND |
| 12 | RI+ |
| 13 | A+ (COS) |
| 14 | B+ (SIN) |

SINADRIVES GmbH:

Schumannstraße 27 | 60325 Frankfurt am Main
Tel. +49 (0) 69 505 027 470
info@sinadrives.com

SINADRIVES Spanien

SAIN AUTOMATION SOLUTIONS S.L:

Avinguda Mas Pins, 164 Nave 6
17457 Riudellots de la Selva - Girona | Spanien
Tel. +34 972 442 452 | Fax: +34 972 442 317
info@sinadrives.com

Zubehör