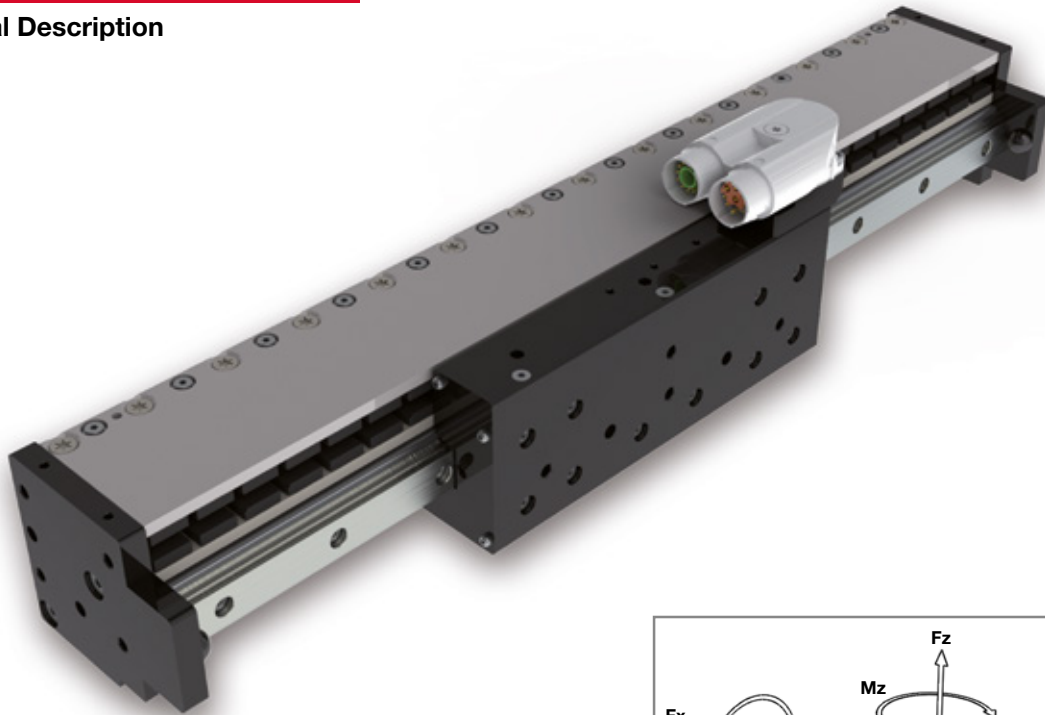
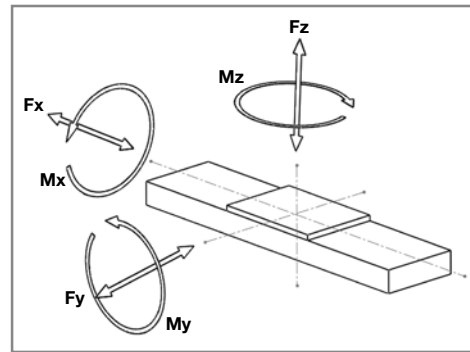


# MLU 3 linear motor stages

## Technical Description



Repeatability of measuring system:  $\pm 1 \mu\text{m}$   
 Repeatability linear unit:  $\pm 10 \mu\text{m}$   
 Maximum speed: 9 m/s  
 Maximum acceleration: 200 m/s<sup>2</sup>  
 Maximum Length without joints: up to 1.000 mm  
 Operating voltage: 300Vdc  
 Max. Operating voltage: 300Vdc



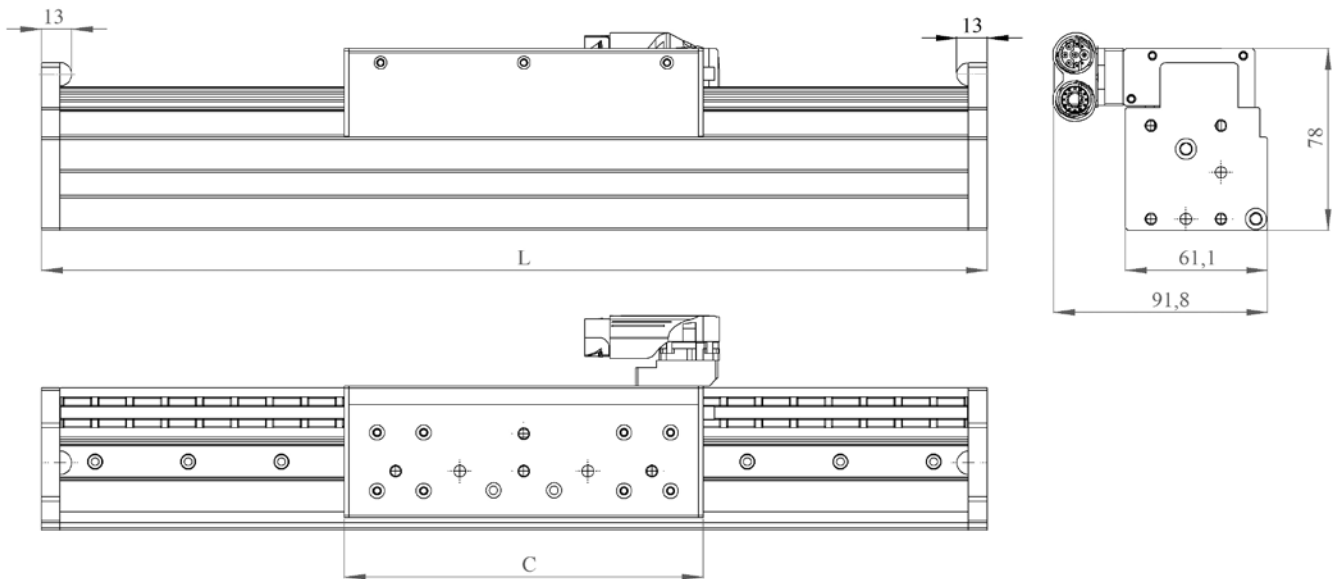
### Mechanical specifications

Linear motor stage		MLU30100		MLU30200		MLU30300		MLU30400	
Carriage typ		R		S	R	S	R	S	R
<b>Linear motor features</b>									
Maximum speed <sup>1)</sup>	m/s							5	
Continuous force aircooled <sup>2)</sup>	N	29		58		87		116	
Peak force	N	100		200		300		400	
Nominal current	A	0,8		1,6		2,4		3,2	
Peak current	A	2,8		5,5		8,3		11,0	
<b>Guidance features</b>									
Fy	N	520	520	520	520	520	520	520	750
Fz	N	520	520	520	520	520	520	520	750
Mx	Nm	15	15	15	15	15	15	15	25
My	Nm	70	70	87	87	100	100	100	125
Mz	Nm	70	70	87	87	100	100	100	125
For the sum of all forces and moments:		$\frac{F_{ye}}{F_y} + \frac{F_{ze}}{F_z} + \frac{M_{xe}}{M_x} + \frac{M_{ye}}{M_y} + \frac{M_{ze}}{M_z} < 1$							
		(Xxe = calculated value) (Xx = max. catalogue value)							
<b>Structure profile features</b>									
Geometrical moments of inertia Lx	mm <sup>4</sup>							1,44x10 <sup>5</sup>	
Geometrical moments of inertia Ly	mm <sup>4</sup>							2,42x10 <sup>5</sup>	
Elastic module	N/mm <sup>2</sup>							70000	
<b>Weight</b>									
Weight of carriage	kg	0,6	0,65	1,0	1,5	1,6	2	2,4	
Weight of 100 mm	kg							0,7	

<sup>1)</sup> for a lifetime > 30.000 Km

<sup>2)</sup> depending on the application and ambient temperature

## Dimensions MLU 3



Drawing for reference only. Please ask for ready 3D files.

### Choice of stroke

Linear motor stage	MLU30100	MLU 30200		MLU 30300		MLU 30400	
Carriage typ	R	S	R	S	R	S	R
Carriage length C, mm	154	154	214	214	274	274	324

Length, mm	Code	Stroke <sup>(1)</sup>						
206	00206	26	26	-	-	-	-	-
316	00316	136	136	76	76	16	16	-
406	00406	226	226	166	166	106	106	56
466	00466	286	286	226	226	166	166	116
556	00556	376	376	316	316	256	256	206
616	00616	436	436	376	376	316	316	266
706	00706	526	526	466	466	406	406	356
766	00766	586	586	526	526	466	466	416
796	00796	616	616	556	556	496	496	446
856	00856	676	676	616	616	556	556	506
916	00916	736	736	676	676	616	616	566
946	00946	766	766	706	706	646	646	596
1066	01066	886	886	826	826	766	766	716
1096	01096	916	916	856	856	796	796	746
1186	01186	1006	1006	946	946	886	886	836
1246	01246	1066	1066	1006	1006	946	946	896
1336	01336	1156	1156	1096	1096	1036	1036	986
1486	01486	1306	1306	1246	1246	1186	1186	1136
1576	01576	1396	1396	1336	1336	1276	1276	1226
1636	01636	1456	1456	1396	1396	1336	1336	1286
1726	01726	1546	1546	1486	1486	1426	1426	1376
1876	01876	1696	1696	1636	1636	1576	1576	1526

<sup>1)</sup> Other stroke lengths are available under request

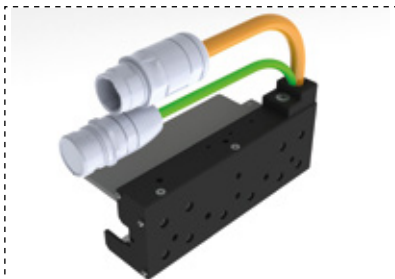
# MLU 3 Options

## Connector Options

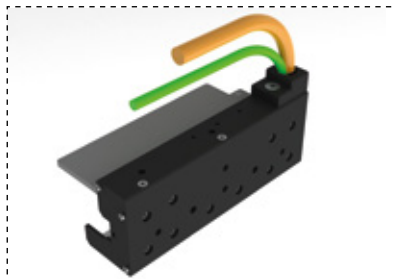
■ angled connectors 90° YTEC (1)



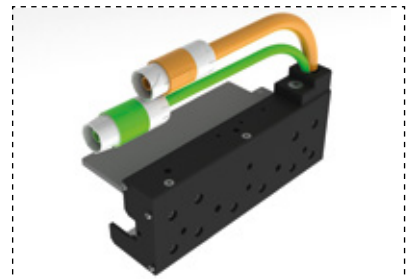
■ cable output with connectors M23 (4)



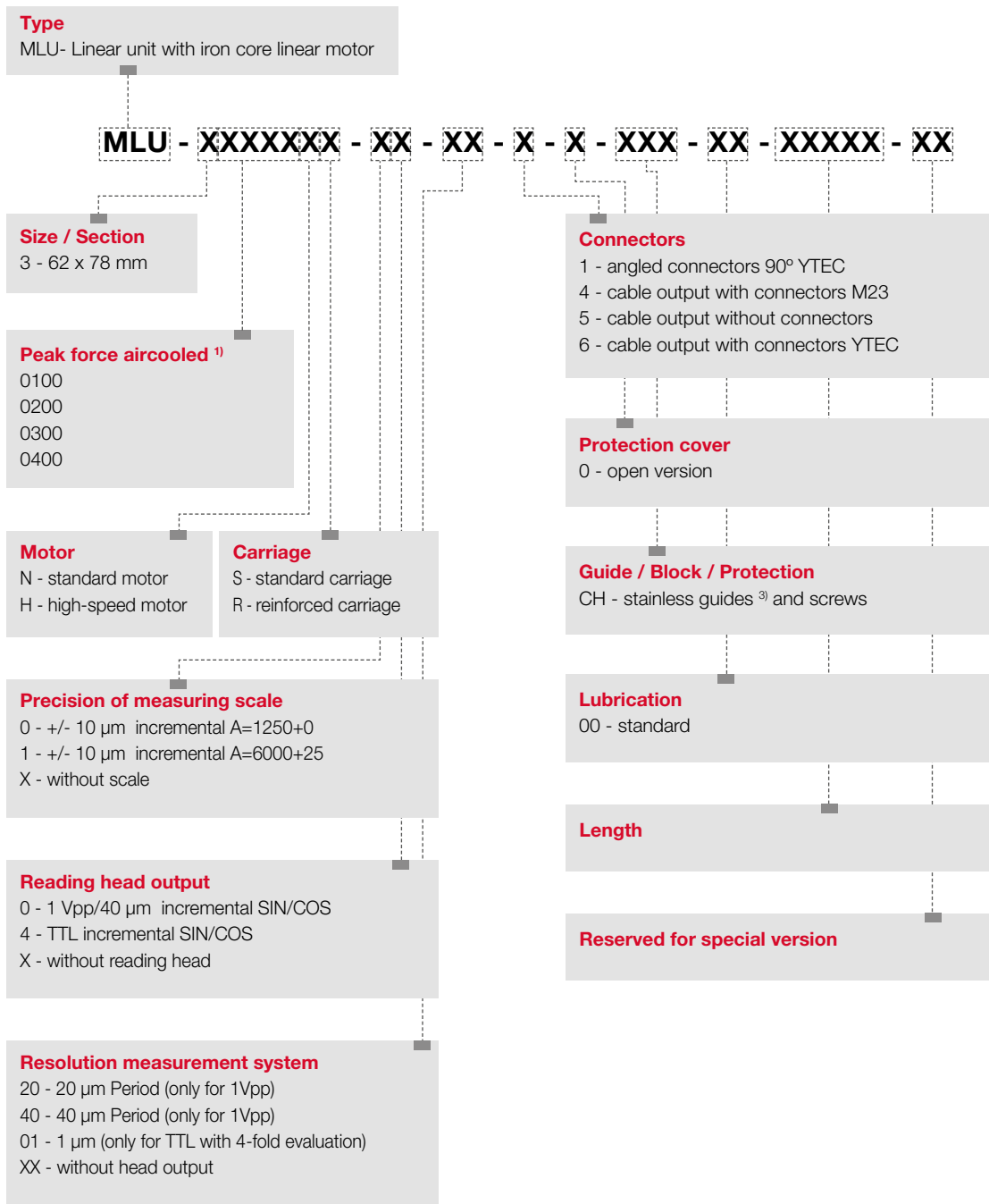
■ cable output without connectors (5)



■ cable output with connectors YTEC (6)



# Order Code MLU 3



<sup>1)</sup> Depends on application and temperature

<sup>2)</sup> On request